



# Floresville Electric Light & Power System

PO Box 218  
Floresville, TX 78114-0218

Main Office - 1400 4<sup>th</sup> Street  
Monday - Friday • 8:00 am - 5:00 pm  
Main Office Door Closes at 4:45 pm  
Phone: (830) 216-7000 • Fax: (830) 393-0362  
www.felps.us

## Account Summary Page

Account Number	Previous Balance	Current Amount	Amount After Due Date
19436-002	0.00	360.42	360.42
19436-004	0.00	1,675.95	1,675.95
19436-011	0.00	301.47	301.47
19436-013	0.00	124.71	124.71
19436-015	0.00	2,612.60	2,612.60
19436-017	0.00	504.90	504.90
19436-025	0.00	754.85	754.85

Account Number	Previous Balance	Current Amount	Amount After Due Date
19436-003	0.00	227.82	227.82
19436-010	0.00	290.47	290.47
19436-012	0.00	1,462.55	1,462.55
19436-014	0.00	2,094.20	2,094.20
19436-016	0.00	250.07	250.07
19436-024	0.00	6,991.09	6,991.09
19436-026	0.00	164.38	164.38

Please detach and return bottom portion with payment. Retain this portion for your records.

TX01340G

Cycle 472

<b>Account #:</b> 19436	<b>Billing Date:</b> 10/22/19
Current Amount Due 11/17/19	17,815.48
Current Amount Due After 11/17/19	17,815.48
<b>Total Due Now</b>	<b>17,815.48</b>

Check here for address or phone number correction and complete form on reverse side. Our records show your phone number is (830) 996-3551.



FLORESVILLE ELECTRIC LIGHT & POWER SYSTEM  
PO BOX 218  
FLORESVILLE TX 78114-0218  
Return Service Requested

FLORESVILLE ELECTRIC LIGHT & POWER 472  
PO BOX 218  
FLORESVILLE TX 78114-0218



STOCKDALE ISD  
PO BOX 7  
STOCKDALE TX 78160-0007

0  
7

0000086925    00019436000    00001781548    00001781548    2





**Floresville Electric Light & Power System**  
 PO Box 218  
 Floresville, TX 78114-0218

Main Office - 1400 4<sup>th</sup> Street  
 Monday - Friday • 8:00 am - 5:00 pm  
 Main Office Door Closes at 4:45 pm  
 Phone: (830) 216-7000 • Fax: (830) 393-0362  
 www.felps.us

STOCKDALE ISD  
 PO BOX 7  
 STOCKDALE TX 78160-0007

Cycle 472

<b>Account #:</b> 19436-002	<b>Billing Date:</b> 10/22/19
Current Amount Due 11/17/19	360.42
Current Amount Due After 11/17/19	360.42
<b>Total Due Now</b>	<b>360.42</b>

**Account #:** 19436-002  
**Service Address:** 503 S 4TH ST-FIELD HOUSE/ISS  
**Service Description:** FIELD HOUSE/ISS

**Service Dates:** 09/16/19 - 10/21/19  
 10/21/19 - 10/21/19  
**Meter #:** 61307  
**Rate:** SMALL COMMERCIAL  
**Total:** 360.42

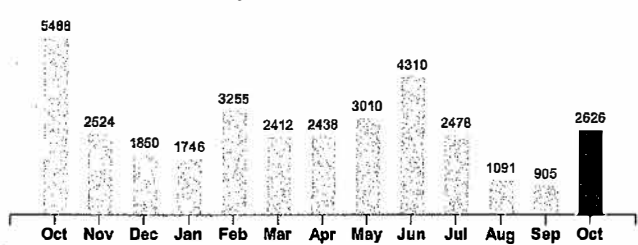
Current Reading	Previous Reading	Multiplier	KWH Usage
1	0	X	1 = 1
27989	25364	X	1 = 2625

Previous Balance	165.61
Payment	-165.61

**Distribution Charges**

Monthly Service Charge		30.00
Energy Charge	2626 KWH x 0.044200	116.07
1 Com HPS 400W		10.50
1 Com MV 175W		5.75
Generation & Transmission	2871 KWH x 0.069000	198.10
<b>Current Amount Due</b>		<b>360.42</b>

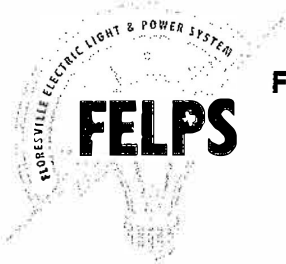
Your Electricity Use Over The Last 13 Months



Comparisons	Days Service	KWH Used	AVG KWH/Day	Cost/Day
<b>Current Billing</b>	35	2626	75	10.30
<b>Previous Billing</b>	33	905	27	5.02
<b>Last Year</b>	31	5488	177	22.63

\*Fees will be changing effective October 1, 2019.\* Please visit [www.felps.us](http://www.felps.us). Click on About Us and Select Terms and Conditions to view the new changes.





**Floresville Electric Light & Power System**  
 PO Box 218  
 Floresville, TX 78114-0218

Main Office - 1400 4<sup>th</sup> Street  
 Monday - Friday • 8:00 am - 5:00 pm  
 Main Office Door Closes at 4:45 pm  
 Phone: (830) 216-7000 • Fax: (830) 393-0362  
 www.felps.us

STOCKDALE ISD  
 PO BOX 7  
 STOCKDALE TX 78160-0007

Cycle 472

<b>Account #:</b> 19436-003	<b>Billing Date:</b> 10/22/19
Current Amount Due 11/17/19	227.82
Current Amount Due After 11/17/19	227.82
<b>Total Due Now</b>	<b>227.82</b>

**Account #:** 19436-003  
**Service Address:** 503 S 4TH ST  
**Service Description:** FOOTBALL FIELD LIGHTING

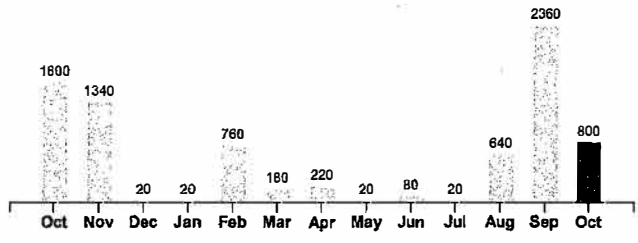
**Service Dates:** 09/19/19 - 10/17/19      **Meter #:** 23748  
**Rate:** OUTDOOR RECREATIONAL LIGHTING      **Total:** 227.82

Current Reading Previous Reading Multiplier KWH Usage  
 2614 - 2574 X 20 = 800

Previous Balance 526.87  
 Payment -526.87

**Distribution Charges**  
 Monthly Service Charge 30.00  
 Energy Charge 800 KWH x 0.122700 98.16  
 2 Com HPS 400W 21.00  
 Generation & Transmission 1140 KWH x 0.069000 78.66  
**Current Amount Due 227.82**

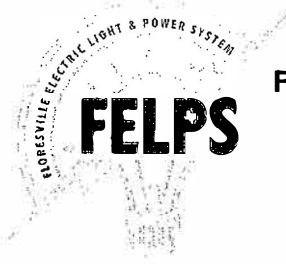
Your Electricity Use Over The Last 13 Months



Comparisons	Days Service	KWH Used	AVG KWH/Day	Cost/Day
<b>Current Billing</b>	28	800	29	8.14
<b>Previous Billing</b>	31	2360	76	17.00
<b>Last Year</b>	30	1600	53	12.90

\*Fees will be changing effective October 1, 2019.\* Please visit [www.felps.us](http://www.felps.us). Click on About Us and Select Terms and Conditions to view the new changes.





**Floresville Electric Light & Power System**

PO Box 218  
Floresville, TX 78114-0218

Main Office - 1400 4<sup>th</sup> Street  
Monday - Friday • 8:00 am - 5:00 pm  
Main Office Door Closes at 4:45 pm  
Phone: (830) 216-7000 • Fax: (830) 393-0362  
www.felps.us

STOCKDALE ISD  
PO BOX 7  
STOCKDALE TX 78160-0007

Cycle 472

<b>Account #:</b> 19436-004	<b>Billing Date:</b> 10/22/19
Current Amount Due 11/17/19	1,675.95
Current Amount Due After 11/17/19	1,675.95
<b>Total Due Now</b>	<b>1,675.95</b>

**Account #:** 19436-004  
**Service Address:** 500 S 4TH ST JUNIOR HIGH  
**Service Description:** JUNIOR HIGH

**Service Dates:** 09/19/19 - 10/22/19  
10/22/19 - 10/22/19  
**Meter #:** 63021  
**Rate:** MEDIUM COMMERCIAL  
**Total:** 1,675.95

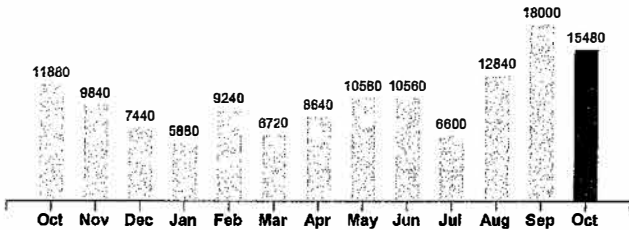
Current Reading	Previous Reading	Multiplier	KWH Usage
1	- 0	X 120	= 120
25254	- 25126	X 120	= 15360

Previous Balance 1,923.43  
Payment -1,923.43

**Distribution Charges**

Monthly Service Charge		60.00
Energy Charge	15480 KWH x 0.022300	345.20
Demand Charge	76.680 KW x 2.500000	191.70
1 Com MV 175W		5.75
Generation & Transmission	15555 KWH x 0.069000	1,073.30
<b>Current Amount Due</b>		<b>1,675.95</b>

Your Electricity Use Over The Last 13 Months



Comparisons	Days Service	KWH Used	AVG KWH/Day	Cost/Day
<b>Current Billing</b>	33	15480	469	50.79
<b>Previous Billing</b>	31	18000	581	62.05
<b>Last Year</b>	30	11880	396	46.99

\*Fees will be changing effective October 1, 2019.\* Please visit [www.felps.us](http://www.felps.us). Click on About Us and Select Terms and Conditions to view the new changes.





**Floresville Electric Light & Power System**  
 PO Box 218  
 Floresville, TX 78114-0218

Main Office - 1400 4<sup>th</sup> Street  
 Monday - Friday • 8:00 am - 5:00 pm  
 Main Office Door Closes at 4:45 pm  
 Phone: (830) 216-7000 • Fax: (830) 393-0362  
 www.felps.us

Cycle 472

STOCKDALE ISD  
 PO BOX 7  
 STOCKDALE TX 78160-0007

<b>Account #:</b> 19436-010	<b>Billing Date:</b> 10/22/19
Current Amount Due 11/17/19	290.47
Current Amount Due After 11/17/19	290.47
<b>Total Due Now</b>	<b>290.47</b>

**Account #:** 19436-010  
**Service Address:** 500 S 4TH ST  
**Service Description:** CONCESSION STAND

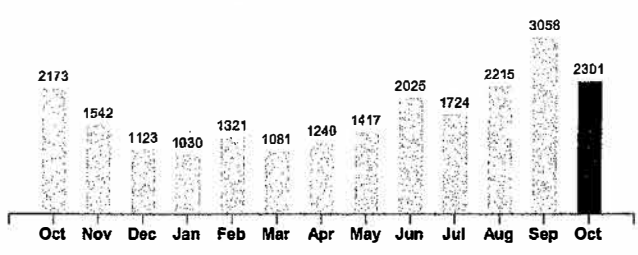
**Service Dates:** 09/19/19 - 10/17/19  
**Meter #:** 52467  
**Rate:** SMALL COMMERCIAL  
**Total:** 290.47

Current Reading Previous Reading Multiplier KWH Usage  
 16610 - 14309 X 1 = 2301

Previous Balance 376.16  
 Payment -376.16

**Distribution Charges**  
 Monthly Service Charge 30.00  
 Energy Charge 2301 KWH x 0.044200 101.70  
 Generation & Transmission 2301 KWH x 0.069000 158.77  
**Current Amount Due 290.47**

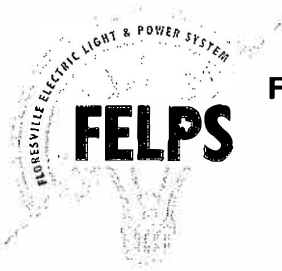
Your Electricity Use Over The Last 13 Months



Comparisons	Days Service	KWH Used	AVG KWH/Day	Cost/Day
<b>Current Billing</b>	28	2301	82	10.37
<b>Previous Billing</b>	31	3058	99	12.13
<b>Last Year</b>	30	2173	72	9.42

\*Fees will be changing effective October 1, 2019.\* Please visit [www.felps.us](http://www.felps.us). Click on About Us and Select Terms and Conditions to view the new changes.





## Floresville Electric Light & Power System

PO Box 218  
Floresville, TX 78114-0218

Main Office - 1400 4<sup>th</sup> Street  
Monday - Friday • 8:00 am - 5:00 pm  
Main Office Door Closes at 4:45 pm  
Phone: (830) 216-7000 • Fax: (830) 393-0362  
[www.felps.us](http://www.felps.us)

STOCKDALE ISD  
PO BOX 7  
STOCKDALE TX 78160-0007

Cycle 472

<b>Account #:</b> 19436-011	<b>Billing Date:</b> 10/22/19
Current Amount Due 11/17/19	301.47
Current Amount Due After 11/17/19	301.47
<b>Total Due Now</b>	<b>301.47</b>

**Account #:** 19436-011  
**Service Address:** 503 S 4TH ST  
**Service Description:** ADMINISTRATION BUILDING

**Service Dates:** 09/19/19 - 10/17/19      **Meter #:** 15330  
**Rate:** MEDIUM COMMERCIAL      **Total:** 301.47

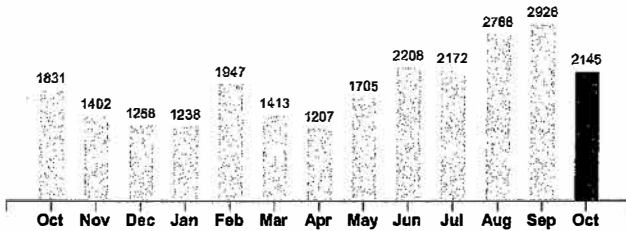
Current Reading Previous Reading Multiplier KWH Usage  
71531 - 69386 X 1 = 2145

Previous Balance 372.77  
Payment -372.77

### Distribution Charges

Monthly Service Charge		60.00
Energy Charge	2145 KWH x 0.022300	47.83
Demand Charge	18.250 KW x 2.500000	45.63
Generation & Transmission	2145 KWH x 0.069000	148.01
<b>Current Amount Due</b>		<b>301.47</b>

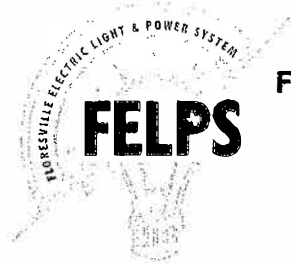
Your Electricity Use Over The Last 13 Months



Comparisons	Days Service	KWH Used	AVG KWH/Day	Cost/Day
Current Billing	28	2145	77	10.77
Previous Billing	31	2926	94	12.02
Last Year	30	1831	61	9.39

\*Fees will be changing effective October 1, 2019.\* Please visit [www.felps.us](http://www.felps.us). Click on About Us and Select Terms and Conditions to view the new changes.





**Floresville Electric Light & Power System**

PO Box 218  
 Floresville, TX 78114-0218

Main Office - 1400 4<sup>th</sup> Street  
 Monday - Friday • 8:00 am - 5:00 pm  
 Main Office Door Closes at 4:45 pm  
 Phone: (830) 216-7000 • Fax: (830) 393-0362  
 www.felps.us

Cycle 470

<b>Account #:</b> 19436-012	<b>Billing Date:</b> 10/22/19
Current Amount Due 11/17/19	1,462.55
Current Amount Due After 11/17/19	1,462.55
<b>Total Due Now</b>	<b>1,462.55</b>

STOCKDALE ISD  
 PO BOX 7  
 STOCKDALE TX 78160-0007

**Account #:** 19436-012  
**Service Address:** 800 S 6TH ST  
**Service Description:** STOCKDALE ELEMENTARY

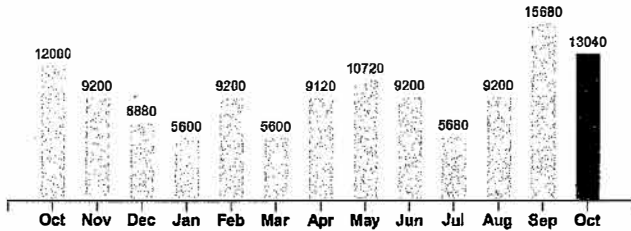
**Service Dates:** 09/19/19 - 10/17/19  
**Meter #:** 16308  
**Rate:** MEDIUM COMMERCIAL  
**Total:** 1,462.55

Current Reading Previous Reading Multiplier KWH Usage  
 55908 - 55745 X 80 = 13040

Previous Balance 1,706.38  
 Payment -1,706.38

**Distribution Charges**  
 Monthly Service Charge 60.00  
 Energy Charge 13040 KWH x 0.022300 290.79  
 Demand Charge 84.800 KW x 2.500000 212.00  
 Generation & Transmission 13040 KWH x 0.069000 899.76  
**Current Amount Due 1,462.55**

Your Electricity Use Over The Last 13 Months



Comparisons	Days Service	KWH Used	AVG KWH/Day	Cost/Day
<b>Current Billing</b>	28	13040	466	52.23
<b>Previous Billing</b>	31	15680	506	55.04
<b>Last Year</b>	29	12000	414	47.94

\*Fees will be changing effective October 1, 2019.\* Please visit [www.felps.us](http://www.felps.us). Click on About Us and Select Terms and Conditions to view the new changes.





**Floresville Electric Light & Power System**

PO Box 218  
Floresville, TX 78114-0218

Main Office - 1400 4<sup>th</sup> Street  
Monday - Friday • 8:00 am - 5:00 pm  
Main Office Door Closes at 4:45 pm  
Phone: (830) 216-7000 • Fax: (830) 393-0362  
www.felps.us

STOCKDALE ISD  
PO BOX 7  
STOCKDALE TX 78160-0007

Cycle 458

<b>Account #:</b> 19436-013	<b>Billing Date:</b> 10/22/19
Current Amount Due 11/17/19	124.71
Current Amount Due After 11/17/19	124.71
<b>Total Due Now</b>	<b>124.71</b>

**Account #:** 19436-013  
**Service Address:** 335 FM 1107  
**Service Description:** BASEBALL FIELD

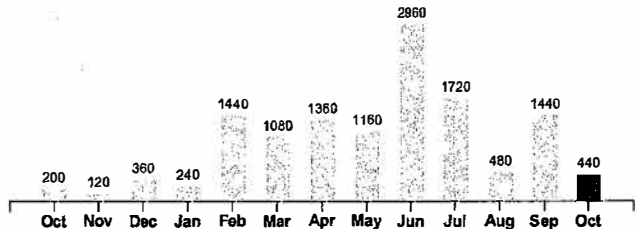
**Service Dates:** 09/15/19 - 10/14/19      **Meter #:** 31128  
**Rate:** OUTDOOR RECREATIONAL LIGHTING      **Total:** 124.71

Current Reading    Previous Reading    Multiplier    KWH Usage  
641                  -                  630                  X                  40                  =                  440

Previous Balance                                  316.41  
Payment    -316.41

**Distribution Charges**  
Monthly Service Charge                                  30.00  
Energy Charge                                  440 KWH x 0.122700                                  53.99  
1 Com HPS 100W    7.25  
Generation & Transmission                                  485 KWH x 0.069000                                  33.47  
**Current Amount Due                                  124.71**

Your Electricity Use Over The Last 13 Months



Comparisons	Days Service	KWH Used	AVG KWH/Day	Cost/Day
<b>Current Billing</b>	29	440	15	4.30
<b>Previous Billing</b>	32	1440	45	9.89
<b>Last Year</b>	30	200	7	2.65

\*Fees will be changing effective October 1, 2019.\* Please visit [www.felps.us](http://www.felps.us). Click on About Us and Select Terms and Conditions to view the new changes.







**Floresville Electric Light & Power System**  
 PO Box 218  
 Floresville, TX 78114-0218

Main Office - 1400 4<sup>th</sup> Street  
 Monday - Friday • 8:00 am - 5:00 pm  
 Main Office Door Closes at 4:45 pm  
 Phone: (830) 216-7000 • Fax: (830) 393-0362  
 www.felps.us

STOCKDALE ISD  
 PO BOX 7  
 STOCKDALE TX 78160-0007

Cycle 472

<b>Account #:</b> 19436-014	<b>Billing Date:</b> 10/22/19
Current Amount Due 11/17/19	2,094.20
Current Amount Due After 11/17/19	2,094.20
<b>Total Due Now</b>	<b>2,094.20</b>

**Account #:** 19436-014  
**Service Address:** 500 S 4TH ST  
**Service Description:** GYMNASIUM

**Service Dates:** 09/16/19 - 10/14/19      **Meter #:** 30360  
**Rate:** MEDIUM COMMERCIAL      **Total:** 2,094.20

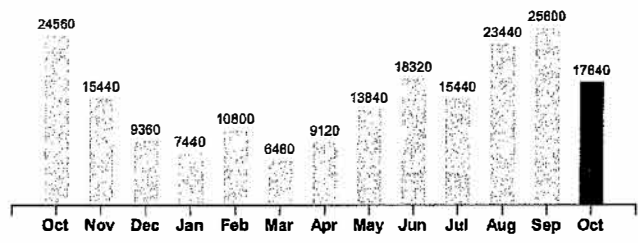
Current Reading    Previous Reading    Multiplier    KWH Usage  
 12354    -    12131    X    80    =    17840

Previous Balance      2,802.69  
 Payment                -2,802.69

**Distribution Charges**

Monthly Service Charge      60.00  
 Energy Charge      17840 KWH x 0.022300      397.83  
 Demand Charge      99.920 KW x 2.500000      249.80  
 7 Com HPS 400W      73.50  
 Generation & Transmission      19030 KWH x 0.069000      1,313.07  
**Current Amount Due**      **2,094.20**

Your Electricity Use Over The Last 13 Months



Comparisons	Days Service	KWH Used	AVG KWH/Day	Cost/Day
Current Billing	28	17840	637	74.79
Previous Billing	33	25600	776	84.93
Last Year	30	24560	819	94.69

\*Fees will be changing effective October 1, 2019.\* Please visit [www.felps.us](http://www.felps.us). Click on About Us and Select Terms and Conditions to view the new changes.




**Floresville Electric Light & Power System**

 PO Box 218  
 Floresville, TX 78114-0218

 Main Office - 1400 4<sup>th</sup> Street  
 Monday - Friday • 8:00 am - 5:00 pm  
 Main Office Door Closes at 4:45 pm

Phone: (830) 216-7000 • Fax: (830) 393-0362

[www.felps.us](http://www.felps.us)

 STOCKDALE ISD  
 PO BOX 7  
 STOCKDALE TX 78160-0007

Cycle 470

<b>Account #:</b> 19436-015	<b>Billing Date:</b> 10/22/19
Current Amount Due 11/17/19	2,612.60
Current Amount Due After 11/17/19	2,612.60
<b>Total Due Now</b>	<b>2,612.60</b>

**Account #:** 19436-015

**Service Address:** 800 S 6TH ST

**Service Description:** ELEMENTARY SCHOOL ADDITION

**Service Dates:** 09/19/19 - 10/17/19

**Meter #:** 25560

**Rate:** LARGE COMMERCIAL

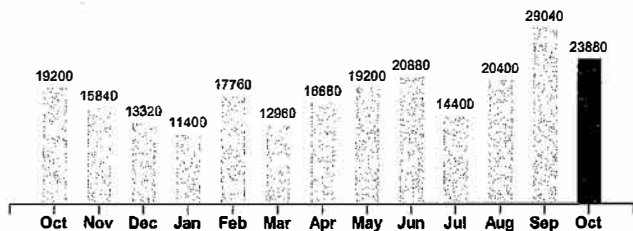
**Total:** 2,612.60

Current Reading	Previous Reading	Multiplier	KWH Usage
30928	- 30729	X 120	= 23880

Previous Balance	3,099.26
Payment	-3,099.26

**Distribution Charges**

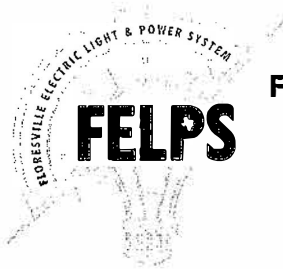
Monthly Service Charge		100.00
Energy Charge	23880 KWH x 0.020500	489.54
Demand Charge	120.000 KW x 3.000000	360.00
1 Com HPS 250W		7.75
Generation & Transmission	23990 KWH x 0.069000	1,655.31
<b>Current Amount Due</b>		<b>2,612.60</b>

**Your Electricity Use Over The Last 13 Months**


Comparisons	Days Service	KWH Used	AVG KWH/Day	Cost/Day
<b>Current Billing</b>	28	23880	853	93.31
<b>Previous Billing</b>	31	29040	937	99.98
<b>Last Year</b>	29	19200	662	75.37

\*Fees will be changing effective October 1, 2019.\* Please visit [www.felps.us](http://www.felps.us). Click on About Us and Select Terms and Conditions to view the new changes.





**Floresville Electric Light & Power System**

PO Box 218  
Floresville, TX 78114-0218

Main Office - 1400 4<sup>th</sup> Street  
Monday - Friday • 8:00 am - 5:00 pm  
Main Office Door Closes at 4:45 pm  
Phone: (830) 216-7000 • Fax: (830) 393-0362  
www.felps.us

STOCKDALE ISD  
PO BOX 7  
STOCKDALE TX 78160-0007

Cycle 464

<b>Account #:</b> 19436-016	<b>Billing Date:</b> 10/22/19
Current Amount Due 11/17/19	250.07
Current Amount Due After 11/17/19	250.07
<b>Total Due Now</b>	<b>250.07</b>

**Account #:** 19436-016  
**Service Address:** 508 STATE HIGHWAY 123 N  
**Service Description:** NEW BUS YARD

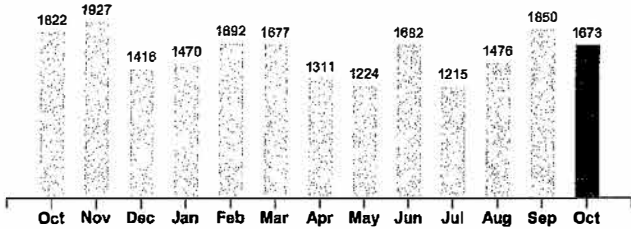
**Service Dates:** 09/18/19 - 10/17/19      **Meter #:** 53540  
**Rate:** SMALL COMMERCIAL      **Total:** 250.07

Current Reading Previous Reading Multiplier KWH Usage  
15568 - 13895 X 1 = 1673

Previous Balance 270.10  
Payment -270.10

**Distribution Charges**  
Monthly Service Charge 30.00  
Energy Charge 1673 KWH x 0.044200 73.95  
2 Com HPS 250W 15.50  
Generation & Transmission 1893 KWH x 0.069000 130.62  
**Current Amount Due 250.07**

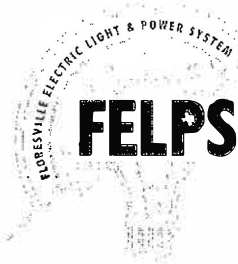
Your Electricity Use Over The Last 13 Months



Comparisons	Days Service	KWH Used	AVG KWH/Day	Cost/Day
<b>Current Billing</b>	29	1673	58	8.62
<b>Previous Billing</b>	30	1850	62	9.00
<b>Last Year</b>	30	1822	61	9.10

\*Fees will be changing effective October 1, 2019.\* Please visit [www.felps.us](http://www.felps.us). Click on About Us and Select Terms and Conditions to view the new changes.





# Floresville Electric Light & Power System

PO Box 218  
Floresville, TX 78114-0218

Main Office - 1400 4<sup>th</sup> Street  
Monday - Friday • 8:00 am - 5:00 pm  
Main Office Door Closes at 4:45 pm  
Phone: (830) 216-7000 • Fax: (830) 393-0362  
[www.felps.us](http://www.felps.us)

STOCKDALE ISD  
PO BOX 7  
STOCKDALE TX 78160-0007

Cycle 470

<b>Account #:</b> 19436-017	<b>Billing Date:</b> 10/22/19
Current Amount Due 11/17/19	504.90
Current Amount Due After 11/17/19	504.90
<b>Total Due Now</b>	<b>504.90</b>

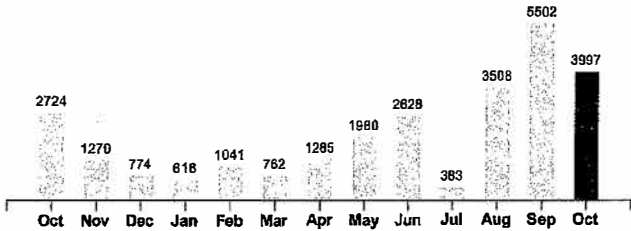
**Account #:** 19436-017  
**Service Address:** 403 W SALMON ST  
**Service Description:** BAND HALL

**Service Dates:** 09/19/19 - 10/17/19      **Meter #:** 21984  
**Rate:** MEDIUM COMMERCIAL      **Total:** 504.90

Current Reading   Previous Reading   Multiplier   KWH Usage  
88073   -   84076   X   1   =   3997

Previous Balance      640.48  
Payment                 -640.48

Your Electricity Use Over The Last 13 Months



**Distribution Charges**

Monthly Service Charge      60.00  
Energy Charge      3997 KWH x 0.022300      89.13  
Demand Charge      27.848 KW x 2.500000      69.62  
1 Com HPS 100W      7.25  
Generation & Transmission      4042 KWH x 0.069000      278.90  
**Current Amount Due      504.90**

Comparisons	Days Service	KWH Used	AVG KWH/Day	Cost/Day
<b>Current Billing</b>	28	3997	143	18.03
<b>Previous Billing</b>	31	5502	177	20.66
<b>Last Year</b>	29	2724	94	13.48

\*Fees will be changing effective October 1, 2019.\* Please visit [www.felps.us](http://www.felps.us). Click on About Us and Select Terms and Conditions to view the new changes.





**Floresville Electric Light & Power System**

PO Box 218  
Floresville, TX 78114-0218

Main Office - 1400 4<sup>th</sup> Street  
Monday - Friday • 8:00 am - 5:00 pm  
Main Office Door Closes at 4:45 pm  
Phone: (830) 216-7000 • Fax: (830) 393-0362  
www.felps.us

STOCKDALE ISD  
PO BOX 7  
STOCKDALE TX 78160-0007

Cycle 472

<b>Account #:</b> 19436-024	<b>Billing Date:</b> 10/22/19
Current Amount Due 11/17/19	6,991.09
Current Amount Due After 11/17/19	6,991.09
<b>Total Due Now</b>	<b>6,991.09</b>

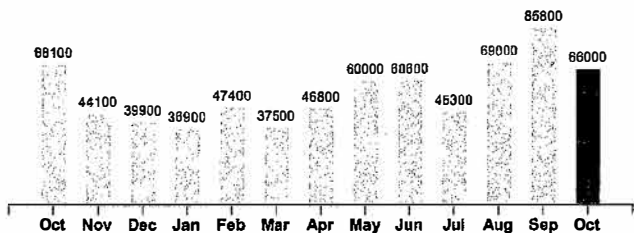
**Account #:** 19436-024  
**Service Address:** S 6TH ST  
**Service Description:** NEW HIGH SCHOOL ADDITION/CAFET

**Service Dates:** 09/19/19 - 10/17/19  
**Meter #:** 25559  
**Rate:** LARGE COMMERCIAL  
**Total:** 6,991.09

Current Reading Previous Reading Multiplier KWH Usage  
38020 - 37800 X 300 = 66000

Previous Balance 8,858.59  
Payment -8,858.59

Your Electricity Use Over The Last 13 Months



**Distribution Charges**

Monthly Service Charge		100.00
Energy Charge	66000 KWH x 0.020500	1,353.00
Demand Charge	291.600 KW x 3.000000	874.80
1 Com HPS 100W		7.25
5 Com HPS 250W		38.75
1 Com MV 400W		10.50
Generation & Transmission	66765 KWH x 0.069000	4,606.79
<b>Current Amount Due</b>		<b>6,991.09</b>

Comparisons	Days Service	KWH Used	AVG KWH/Day	Cost/Day
Current Billing	28	66000	2357	249.68
Previous Billing	31	85800	2768	285.76
Last Year	33	68100	2064	219.67

\*Fees will be changing effective October 1, 2019.\* Please visit [www.felps.us](http://www.felps.us). Click on About Us and Select Terms and Conditions to view the new changes.





# Floresville Electric Light & Power System

PO Box 218  
Floresville, TX 78114-0218

Main Office - 1400 4<sup>th</sup> Street  
Monday - Friday • 8:00 am - 5:00 pm  
Main Office Door Closes at 4:45 pm  
Phone: (830) 216-7000 • Fax: (830) 393-0362  
www.felps.us

STOCKDALE ISD  
PO BOX 7  
STOCKDALE TX 78160-0007

Cycle 472

<b>Account #:</b> 19436-025	<b>Billing Date:</b> 10/22/19
Current Amount Due 11/17/19	754.85
Current Amount Due After 11/17/19	754.85
<b>Total Due Now</b>	<b>754.85</b>

**Account #:** 19436-025  
**Service Address:** 504 S 6TH ST-AG/SCIENCE BLDG  
**Service Description:** AG/SCIENCE BUILDING

**Service Dates:** 09/19/19 - 10/17/19      **Meter #:** 26753  
**Rate:** MEDIUM COMMERCIAL      **Total:** 754.85

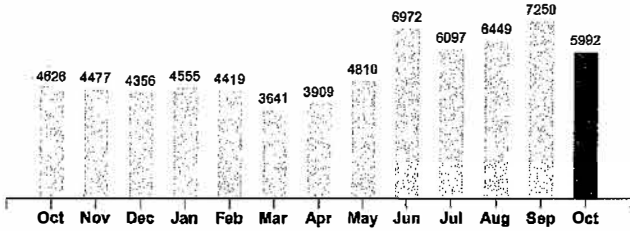
Current Reading    Previous Reading    Multiplier    KWH Usage  
55123                    -    49131        X    1                    =    5992

Previous Balance                    848.29  
Payment                                -848.29

### Distribution Charges

Monthly Service Charge		60.00
Energy Charge	5992 KWH x 0.022300	133.62
Demand Charge	59.110 KW x 2.500000	147.78
Generation & Transmission	5992 KWH x 0.069000	413.45
<b>Current Amount Due</b>		<b>754.85</b>

Your Electricity Use Over The Last 13 Months



Comparisons	Days Service	KWH Used	AVG KWH/Day	Cost/Day
Current Billing	28	5992	214	26.96
Previous Billing	31	7250	234	27.36
Last Year	30	4626	154	21.32

\*Fees will be changing effective October 1, 2019.\* Please visit [www.felps.us](http://www.felps.us). Click on About Us and Select Terms and Conditions to view the new changes.





## Floresville Electric Light & Power System

PO Box 218  
Floresville, TX 78114-0218

Main Office - 1400 4<sup>th</sup> Street  
Monday - Friday • 8:00 am - 5:00 pm  
Main Office Door Closes at 4:45 pm  
Phone: (830) 216-7000 • Fax: (830) 393-0362  
[www.felps.us](http://www.felps.us)

STOCKDALE ISD  
PO BOX 7  
STOCKDALE TX 78160-0007

Cycle 470

<b>Account #:</b> 19436-026	<b>Billing Date:</b> 10/22/19
Current Amount Due 11/17/19	164.38
Current Amount Due After 11/17/19	164.38
<b>Total Due Now</b>	<b>164.38</b>

**Account #:** 19436-026

**Service Address:** SCHOOL & 6TH ST

**Service Description:** TENNIS COURTS

**Service Dates:** 09/19/19 - 10/17/19

**Meter #:** 27678

**Rate:** OUTDOOR RECREATIONAL LIGHTING

**Total:** 164.38

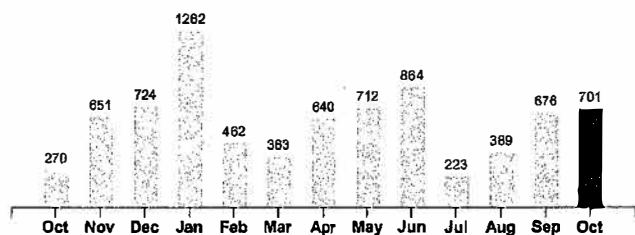
Current Reading   Previous Reading   Multiplier   KWH Usage  
32961   -   32260   X   1   =   701

Previous Balance   159.59  
Payment   -159.59

#### Distribution Charges

Monthly Service Charge		30.00
Energy Charge	701 KWH x 0.122700	86.01
Generation & Transmission	701 KWH x 0.069000	48.37
<b>Current Amount Due</b>		<b>164.38</b>

Your Electricity Use Over The Last 13 Months



Comparisons	Days Service	KWH Used	AVG KWH/Day	Cost/Day
Current Billing	28	701	25	5.87
Previous Billing	31	676	22	5.15
Last Year	29	270	9	2.85

\*Fees will be changing effective October 1, 2019.\* Please visit [www.felps.us](http://www.felps.us). Click on About Us and Select Terms and Conditions to view the new changes.

